



BUG-BYTES

THE MONTHLY ONLINE NEWSLETTER OF *COMPUTER BUGS*

VOL. 8, ISSUE 02

FEBRUARY 2009

PRODUCT REVIEW

GOODSYNC - SYNCHRONIZE AND BACKUP FILES



How do you automatically backup files in multiple locations (laptop, desktops) so that all of the locations reflect the most recent files? The answer is GoodSync.

Backup software works in one direction. That is, the software compares the files on the source machine and copies the files you have specified one-way to another machine, or to another location on the source machine.

GoodSync, or other synchronization software compares files in two locations and updates both locations. This distinction become important if you create and change documents on two or more machines. For example, you work on a desktop computer at home and a laptop at work or on the road. A product, such as GoodSync, enables you to synchronize two or more machines so that the latest data is reflected on all of the computers with which you work.

Shown below is the way I have GoodSych setup to synchronize files between my main computer and a backup computer. Shown at the top are seven separate jobs.

Each job specifies how I want a particular subsets of data

handles. For instance, I have a tab for data, photos, graphics, downloads, music files, cookies, and drivers.

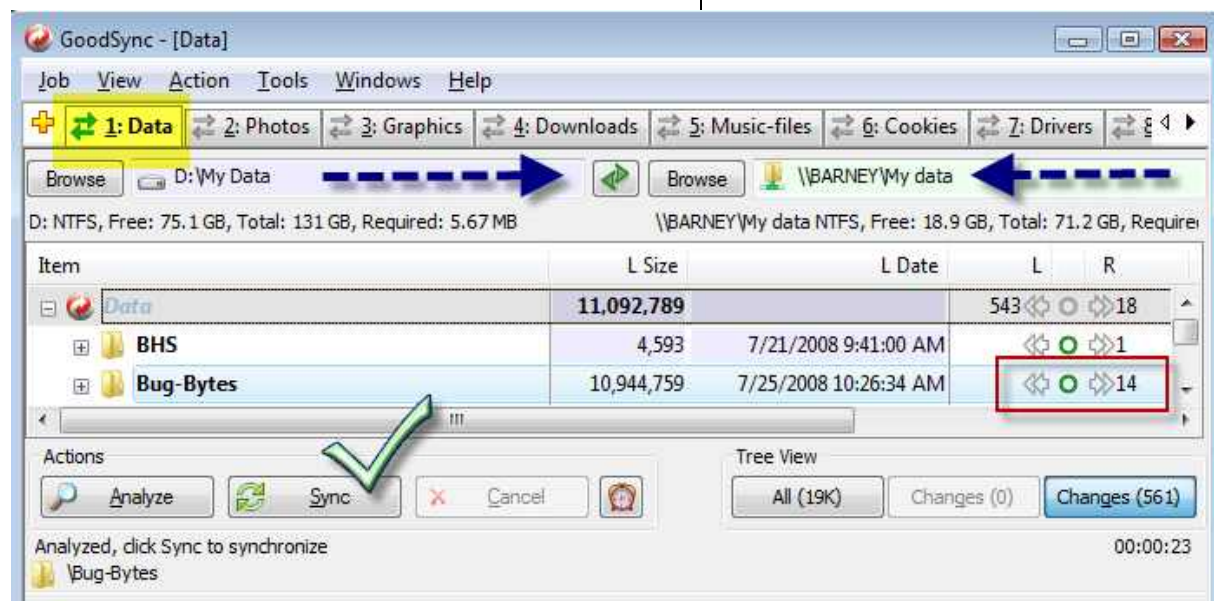
The source files are on the left (D:\My Data), and the target folder is on the right as \\Barney\My data.

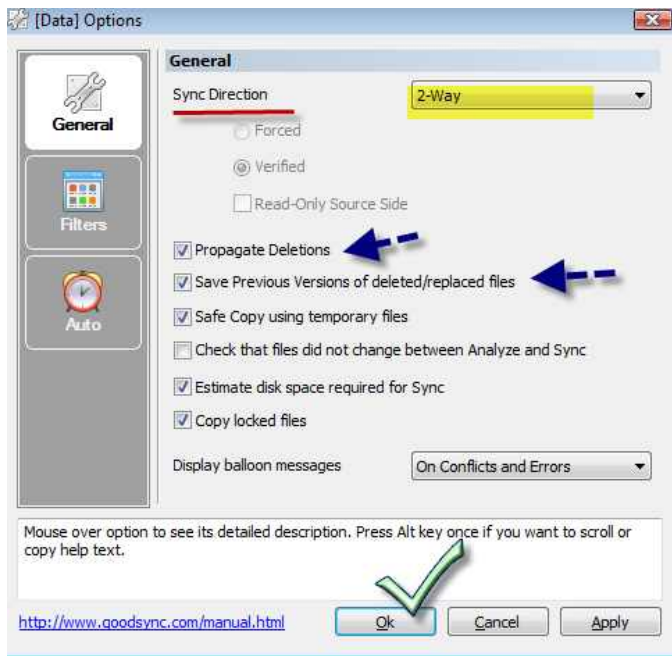
After installing the program you tell it where to find the file folder (browse to them) and where to find the folder that you want to compare (browse to those folder). Select the direction that you want to use (backup or synchronization). Click on Analyze and GoodSync tells you what it plans to do.

Click on Sync to backup (one-way or to synchronize your files (multiple-ways) based on how you setup the product. It quickly follows your instructions. It will even propagate deletions so you don't have to repeat the deletions manually on your target computer. See the screen shot on the next page for other options.

Is the program right for you? Download a limited edition and try the program. You can run the program five time but are limited in how many items can be included in the backup or synchronization. If you find the program useful, buy the full version for \$29.95. Go to www.goodsych.com

See the options screen shot on the next page.





CONTROL ICONS IN YOUR SYSTEM TRAY

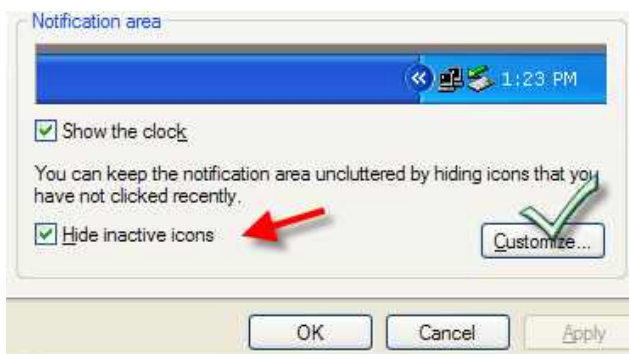
IS YOUR TRAY RUNNING OVER?

The system tray is the area in the lower right corner of your screen.



You can control which of the many icons have a permanent place there. In XP it looks something like the screens shot above, but your tray may have many more icons in it.

To customize the system tray, right-click on an empty space on the adjacent taskbar shown in the screen shot in a darker blue. Select Properties from the drop-down menu and then click on the Customize button as shown below.



Then choose the behavior you want for each icon that you want to permanently appear in your system tray. For example, in the screen shot below, I selected to always show the volume control, the antivirus program and the icon to safely remove digital film cards.

By default most items are set to Hide when inactive. The other available choices are Always Hide, or Always show. Make the choices that you prefer.

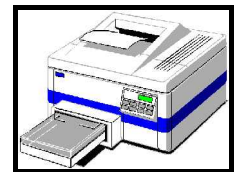
I recommend that you set only those items to Always show that you want immediate access to and that you will access often. See the sample screen shot below. After making your choices, click on the Apply button at the bottom of the dialog box, then on OK. You're done!



SAVE MONEY ON INK

Use draft or fast mode

One of the easiest ways to save money on printer ink is to print all of your normal everyday jobs using your printer's draft or fast mode. Use your printers high quality setting for photos and jobs where heavy ink usage makes a real difference.

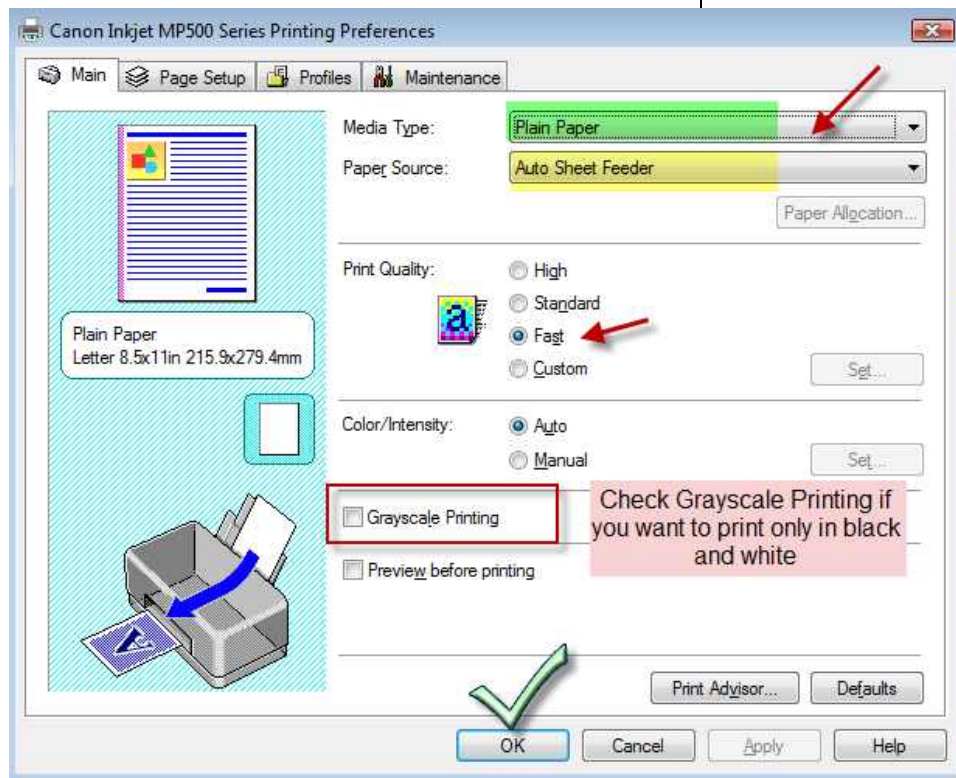


HERE'S HOW

Select the Printer icon in the Control Panel. Right-click on your printer icon. Select Properties, Printing Preferences. Select the Print Quality you want to use as the default setting for you printer. Your choices may look different than that shown for my printer. For example, you may see "Draft" instead of "Fast" as the choice for low ink usage. Click OK.

While the print dialog is open, review the following settings.

- Media or Paper type (**Choose Plain Paper**) It is important. The media you select also determines how much ink is applied to the paper. You want to match the paper you are using with the media type shown in the Media dialog.
- Paper source
- Print Quality
- Grayscale printing



Click on the Page Setup tab and review those settings as well. For example, **you may want to select Print from last page. That causes your print out to stack in your output tray with the last page on the bottom.**

Experiment with some of the other settings, or at least familiarize yourself with what your printer can do for you. **If you only occasionally print in color, select Grayscale printing.** That will save you lots of ink. When you need color and better quality, you can reopen the print dialog and temporarily change the print settings.



Note, that changing your print settings can save lots of ink. That is without resorting to buying refilled cartridges, or refilling them yourself (a messy business). If you want to go the refill-route, that method is still open to you for additional savings.

Remember, printer manufacturers make most of their money on the ink consumables and not on the purchase of their printers. When you buy a new printer, read the reviews for your intended purchase. Check the quality of their printouts, and the average cost per page for text, and cost for graphics and photos. A seemingly "cheap" printer may cost far more over the life of the printer (purchase price plus the cost of consumables) than a printer that has more capabilities, higher quality output, and has a higher purchase price. Buyer beware!

LOOK INSIDE PICASA

THERE IS MUCH TO LIKE

Explore some Picasa's features with me. You may discover some useful features that your overlooked before.

If you have not already done so, do yourself a favor and import your photos into Picasa. Click File, Add Folder to Picasa. From the folder list, select the folders that you want Picasa to monitor. I suggest that you choose the Scan Always options for folders that hold your photos. That

way, Picasa will automatically add any new photos that you take. Click OK. (Download www.picasa.google.com).

Picasa will quickly build a library of your photos. Review the folders on the left of your screen in Picasa and choose one by clicking on it.

CONTROL THUMBNAIL SIZE



Move the slider to the left to dynamically make your thumbnails small, or to the right to make them bigger. See the screen shot above. This capability comes in handy to help you quickly spot photos (smaller size) and to appreciate a particular photos (larger size).



IMPORT PHOTOS AND CREATE A SLIDESHOW

Four buttons appear at the top left of the open Picasa screen. They include Import, Slideshow, Time line, and Gift CD. For the moment, let's take a look at Import.

Use the Import button to capture photos from your all-in-one printer's scanner, or from a folder, such as one on a CD. You can scan one or a series of photos. When you done, click Import All, or Import the selected photo. Depending on your choice, and how many photos you Imported, the photo or photos will be added to the folder of your choice.

To create a slideshow, select a folder, click on the photo where you want your show to start, and click on the Slideshow button. Your slideshow will start with the slide you selected. Click on the minus or plus time to decrease or increase the amount of time between slides.

Click on the left arrow of your keyboard to move back one slide, or the right arrow to move one slide forward. Keep clicking the arrow of your choice to move further back or forward. Marvel at your photography as seen full screen on your monitor. Now doesn't that beat looking at 4"x 6" prints?

EXIF CAMERA DATA

If your camera captures EXIF data, Picasa can display the date and time your picture was taken along with the technical data for your photo. For instance, see the screen shot below for my camera and a picture I took at a recent pic-

| Property | Value |
|---------------|---------------------|
| Dimensions: | 1541 x 2342 pixels |
| Camera make | Panasonic |
| Camera model | DMC-FZ20 |
| Camera Date | 2008:08:17 11:59:09 |
| Resolution | 2560 x 1920 |
| Flash | Not Used |
| Focal length | 20.8mm |
| Exposure time | 0.002s (1/400) |
| Aperture | f/4.0 |
| ISO | 100 |
| Metering Mode | Matrix |
| Exposure | Shutter Priority |
| Thumbnail | 160 x 120 pixels |
| JPEG Quality | 96 (422) |

nic.

EXIF data is useful in analyzing your photos to see how you got that great shot, or possibly why it did not turn out as well as you would have liked.

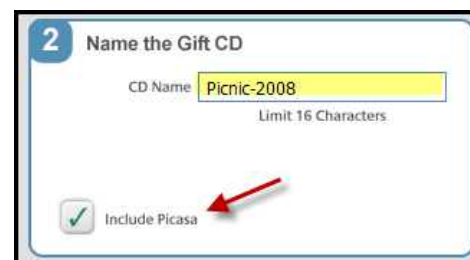


TIMELINE

Right after the Import and Slideshow buttons are Timeline and Gift CD. Click on the Timeline button. Picasa shows a linear scale with a series of brail-like bumps that represent when your pictures were taken. Move the slider to the left to view earlier pictures, or to the right to see more recent pictures. At the point the slider stops, Picasa displays the date for that point. Timeline is a neat feature when you want to locate photos that were taken around a particular time.

GIFT CD

Create a CD in Picasa to share with your family and friends. The CD can include selected photos, and a slideshow of your photos. It can also include a copy of Picasa as a courtesy in case your recipient does not have Picasa, and they use dial-up.



Click on the Burn CD button. It is as easy as that.

Continued on the next page

CREATE A COLLAGE

Would you like to combine two or more photos in a collage? Picasa can do that for you. Click on the Collage button at the lower right of the open Picasa program. It looks like the screen shot at the right.



Select the photos you want to include in your collage. Keep the number small to see more detail. Hold down the control key while you click on the photos that you want. Then, click the Collage button. Next, select how you want your photos displayed (Type: Picture Pile, Picture Grid, Contact Sheet, or Multiple Exposure). Pick the background, select the folder where you want your collage stored, and finally, click the Create button.

See the screen shot below. Two photos were selected in Picture Pile format, with a black background. While Collage is open, you can click on the photos to change their order.



Try it. It is fun to see what you can create.

NEW. CREATE A WEB ALBUM TO SHARE



Picasa offers a new **free service** with one gigabyte (about 4000) pictures of online storage. Click on the Web Album button, and sign-up for the service. Pick the screen name by which you want to be known, and a password. Be sure to write down the information. You will need the information in the future to upload photos to your web album. See the screen shot below.



Once you have registered, select the folder and pictures that you want to upload as a web album. You can create more than one album. Give your new album a name, provide a description, if you wish, and upload your pictures. Review the setting for how large you want the pictures to appear in your web album.

ORDER PRINTS FROM THE COMFORT OF YOUR HOME

Click on the Order Prints button. Picasa offers a long list of photo print sources, links to the sources, and a short description of what each service offers. Select the pictures for which you want prints, and your source will do the rest.



These are just some of the many popular photo printing services. The results are delivered to your door. Save gas.